

Preparedness prevents outbreak devastation

Disease outbreaks cost money, threaten jobs and financially harm businesses.

How serious is a disease outbreak?

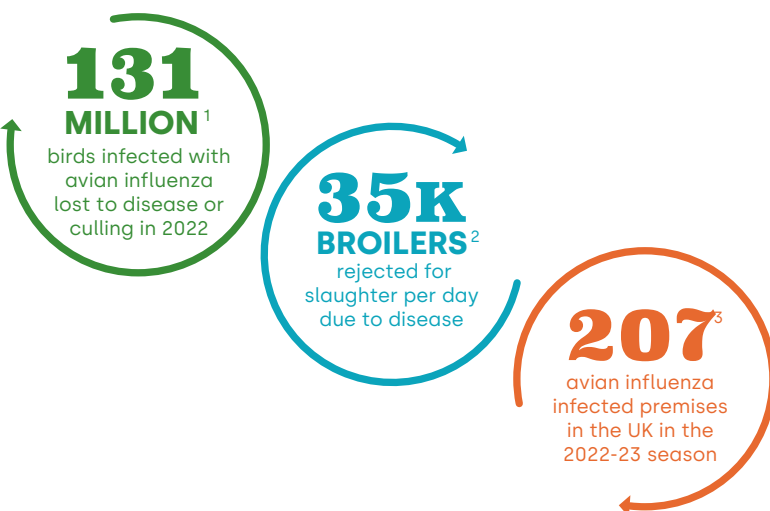
The threat of disease is the most serious issue facing the poultry and egg industries today. With close to a 100% mortality rate, highly pathogenic avian influenza H5N1 has been devastating the UK wild bird and farm flock populations since November 2021. Loss of livestock from a disease outbreak has serious financial costs and in some cases, can lead to business failure.

With us to stay

Disease is not going away. While avian influenza is rightly making the headlines, there are other diseases that need to be taken seriously, including Salmonella and Newcastle Disease.

More than a monetary cost

The damage caused by a disease outbreak goes beyond the immediate financial cost. An outbreak will threaten jobs, reputations and customer relations. All this adds to the day-to-day stress of running a farming business and can impact mental health.



An Emergency Response Plan provides peace of mind

An **Emergency Response Plan (ERP)** has an important role to play in minimising the impacts of a disease outbreak to commercial and backyard poultry keepers, such as:

- **Minimises financial impact by avoiding delays in case reporting**
- **Reduces personal stress through pre-planned checklists**
- **Protects reputation with suppliers and buyers**
- **Safeguards other businesses in the vicinity and wider industry**
- **Looked on favourably by insurance companies**
- **Speeds up the return to production**

£45K

saved by one client with our **Emergency Response Plan**

¹ <https://www.who.int/news/item/12-07-2023-ongoing-avian-influenza-outbreaks-in-animals-pose-risk-to-humans>

² <https://www.theguardian.com/environment/2022/aug/25/over-60-million-chickens-in-england-and-wales-rejected-over-disease-and-defects>

³ <https://commonslibrary.parliament.uk/research-briefings/cbp-9688/>

Best practice for worst case scenarios

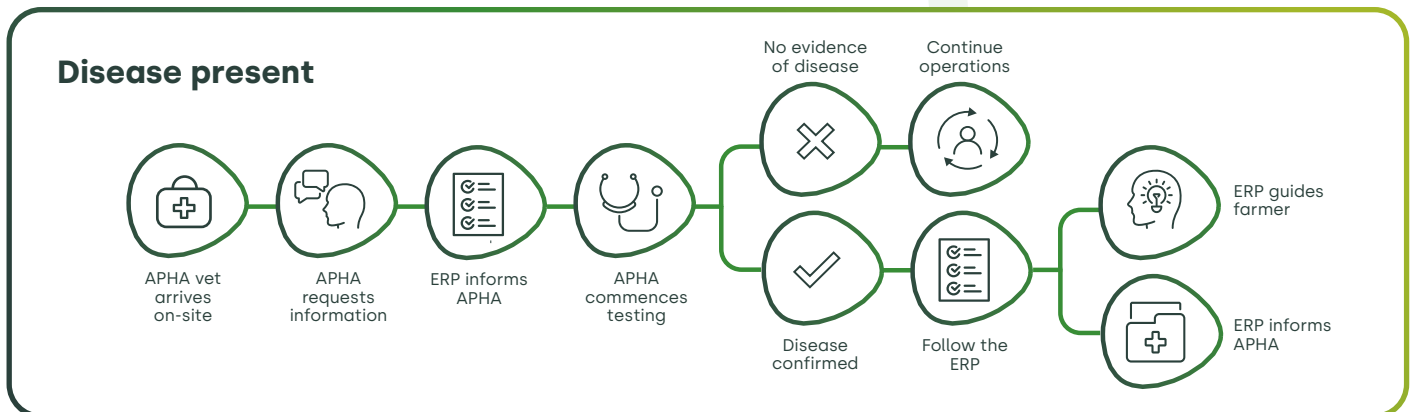
Livetec has invested years of on-farm experience and expertise into a range of plans covering general biosecurity, cleaning and disinfection and the Emergency Response Plan (ERP).

Should the worst happen and a disease outbreak is suspected, speed is of the essence. The Livetec **Emergency Response Plan** collates essential information ahead of time and provides a comprehensive step-by-step action checklist to avoid costly delays on the road to recovery.

This is critical for when the Animal and Plant Health Agency (APHA) needs to act.



Should the local vet confirm suspicions of a notifiable disease outbreak it will be immediately reported to APHA. An APHA vet will arrive on-site and the core of the **Emergency Response Plan** will swing into action.



An Emergency Response Plan prepares farms for the worst and significantly limits the damage of disease

A dual-purpose plan

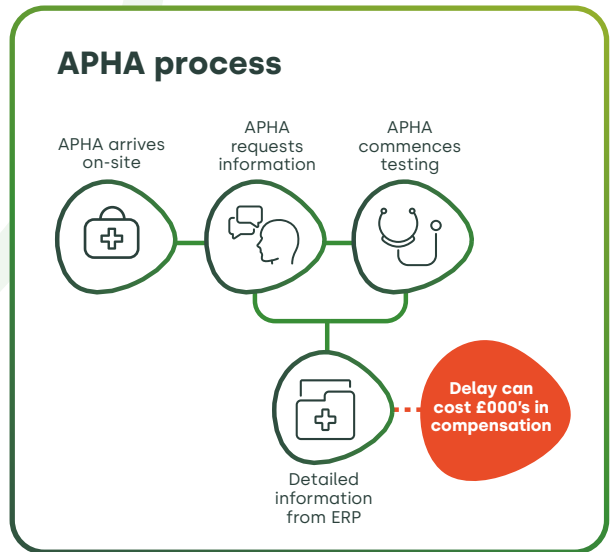
Two copies of the Emergency Response Plan are provided, one to be handed over to APHA, the other one, which has a detailed breakdown, to remain on-site. The ERP provides APHA with all the information and data they will need to complete their initial survey as soon as possible.

It also has a detailed breakdown of all protocols that need to be followed on-site, saving time and reducing the stress on farmers who will now have to deal with a range of unexpected demands.

An affordable solution to a threat you can't afford to ignore

Our Emergency Response Plan includes a step-by-step action checklist, which can be implemented from the moment that disease is suspected.

This contains an extensive record of farm information needed to complete the EXD40 veterinary enquiry form plan, contact listing and mapping of the surrounding area, facility planning for visitors, on-site storage and holding capacity planning, a pest control plan and an outline of depopulation services. Being caught up in a disease outbreak is a traumatic time. Compiling all the required information in advance and having it at your fingertips saves time, stress and money.



Time is money

Government compensation is available for every healthy bird culled due to an avian influenza outbreak.

Compensation is only approved for live birds once APHA has started testing - and this can only begin once the EXD40 has been completed. Without an ERP in place, the large volume of information required for EXD40 will need to be collated from multiple sources: a huge undertaking at a time of high stress. The longer this takes, the greater the likelihood that more birds will die due to disease, lowering the amount of compensation.

The Livetec ERP contains all the information needed to complete the EXD40 and can be immediately handed over to APHA, maximising the level of compensation that can be claimed.

Getting back on your feet

Minimising the delay in completing the EXD40 and maximising financial compensation is just the beginning of a difficult journey back to production.

An **Emergency Response Plan** is the solution to a multitude of hurdles.

Example complications	ERP solutions
Knowing what to do at each stage of a notifiable disease outbreak	✓ Step-by-step action plan
Inadequately resourced for extended closure	✓ The ERP resource matrix ensures site is fully resourced ahead of time
Falling below compliance	✓ ERP ensures farmer is meeting the standards required for the Red Tractor/ Lion Brand assurance schemes
Worker, family and personal uncertainty	✓ Checklist of individual movements off-site so everybody knows what to expect ahead of time
Difficulties securing insurance	✓ ERP can be looked on favourably when actuaries are deciding on whether to insure a business and setting premium levels

The Livetec Emergency Response Plan

The threat of disease outbreaks cannot be ignored. They are with us now and they are likely going to be with us for a while. As disease disruption becomes a fact of business life, safeguards should be put in place ahead of time.

"I would say that the huge benefit of the ERP was the speed of the whole thing. We hear a lot of horror stories about how long it takes to get organised, to get the paperwork drawn up, to get the licences in place.

In our operation here from the vet, sitting down at the kitchen table and telling us we are ready to go and take samples was probably one hour. I've heard a lot of stories where it has taken a whole day. During that process of course, your hens in the sheds are currently dying from AI, but also you don't get paid for hens that are dead before the outbreak, from the government.

It's costing you a lot of money and I would say, on our side, the speed certainly saved us a lot of money."

James Baxter, Farmer, and Chairman of British Free Range Egg Producers Association

Commercial farms and backyard bird keepers have a duty of care not only to their own flocks but to the wider poultry industry as cases of highly contagious avian disease continue.

"You should have plans in place to deal with prolonged movement restrictions. Pressures on accommodation can arise quickly. This applies to farmed animals and domestic pets, but is especially challenging in the pig and poultry sectors."

Contingency plan for exotic notifiable diseases of Animals in England, Defra

James Baxter, Farmer, and Chairman of the British Free Range Egg Producers Association (BFREPA) **saved at least £45,000 using the Livetec Emergency Response Plan.**



Get your Emergency Response Plan

Contact Livetec at
sales@livetecsystems.co.uk